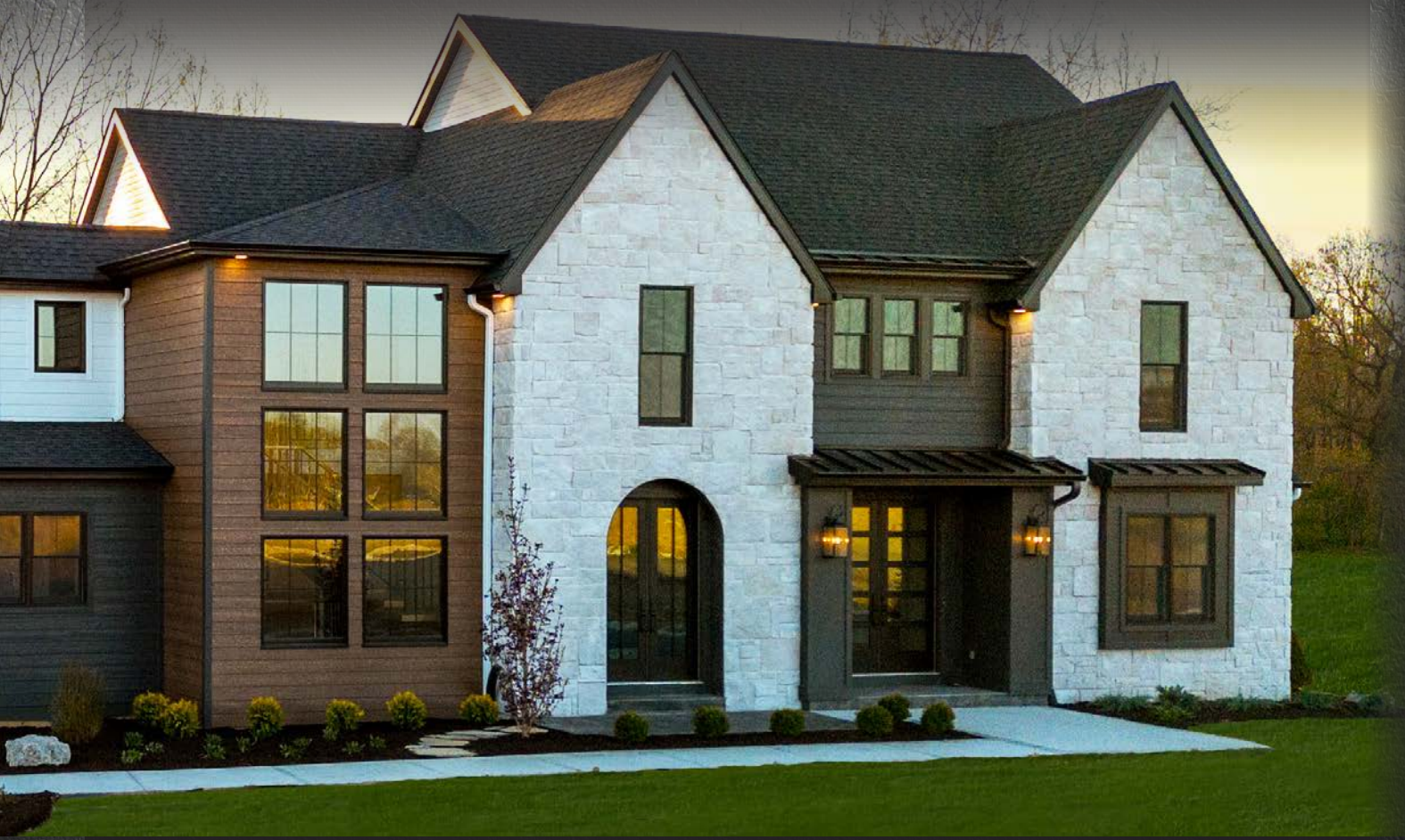


20
26



Prestige
STONE PRODUCTS LLC.

Where quality craftsmanship is a way of life...[®]



CRAFTSMANSHIP

in every detail

Table of Contents



Blanc Old County Ledge

6-15	Commercial and Residential Applications	48-49	Dressed Ashlar
16-23	Weatherledge	50-53	Southern Limestone
24-29	Old County Ledge	54-55	Midwest Dimensional
30-35	Pro Stack	56-57	Designer Cut
36-37	Thin Veneer Brick	58-59	Fieldstone
38-39	Plym Brick	60-67	Accessory Guide
40-43	Ledgestone	70	Installation Guide
44-47	Quarry Cut	71	Warranty

Manufactured Stone Veneer

VS Natural Quarried Stone Veneer

- Not weight bearing, no need for a footer or additional reinforcement and expansion joints
- Competitively priced to be well within budget constraints
- Much larger variety of colors and shapes

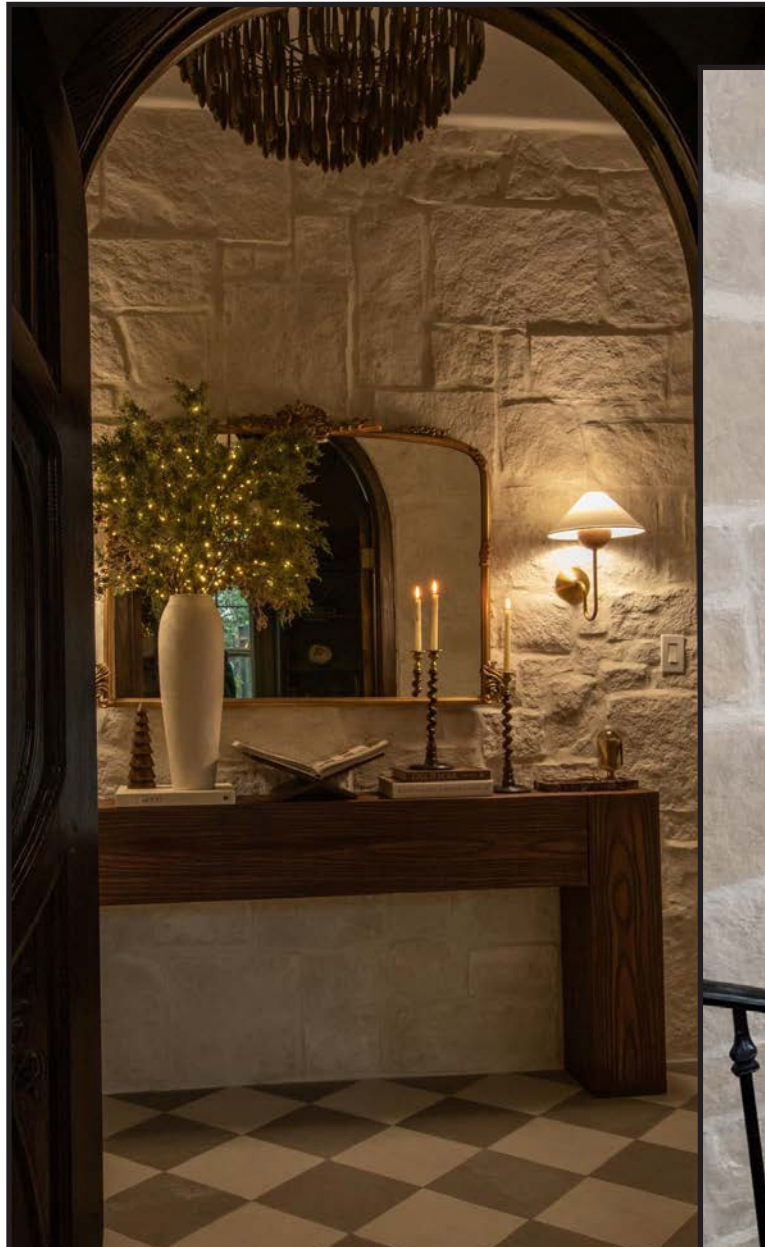


Imperial
PRO STACK



Imperial
WEATHERLEDGE

Featured Interior Applications



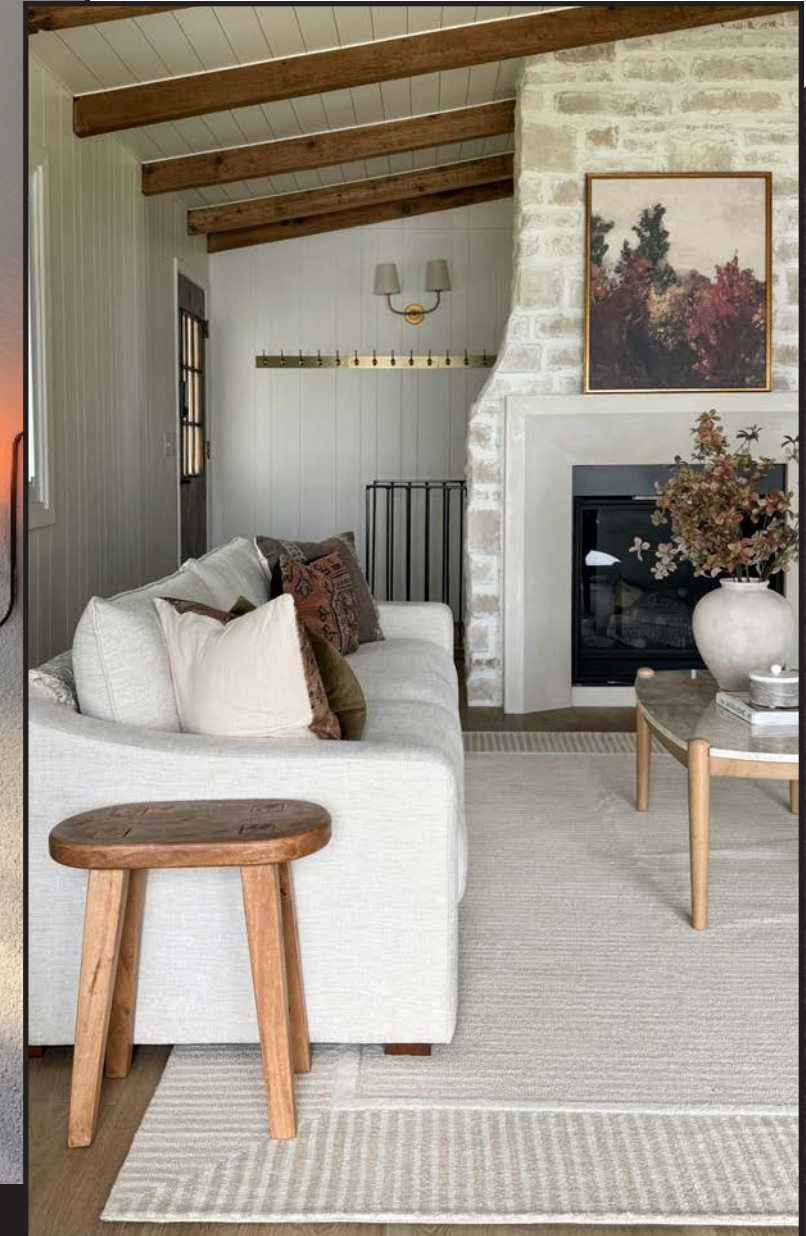
White Onyx Midwest Dimensional



Austin Villa Midwest Dimensional



White Onyx Midwest Dimensional



Venice Southern Limestone

Featured Commercial Applications



Bluegrass LedgeStone and Fieldstone Mix



Pebble Midwest Dimensional



Ohio Southern Limestone



Buck Country Weatherledge

Featured Commercial Applications



Cumberland Fog Pro Stack



Portland Mist Weatherledge

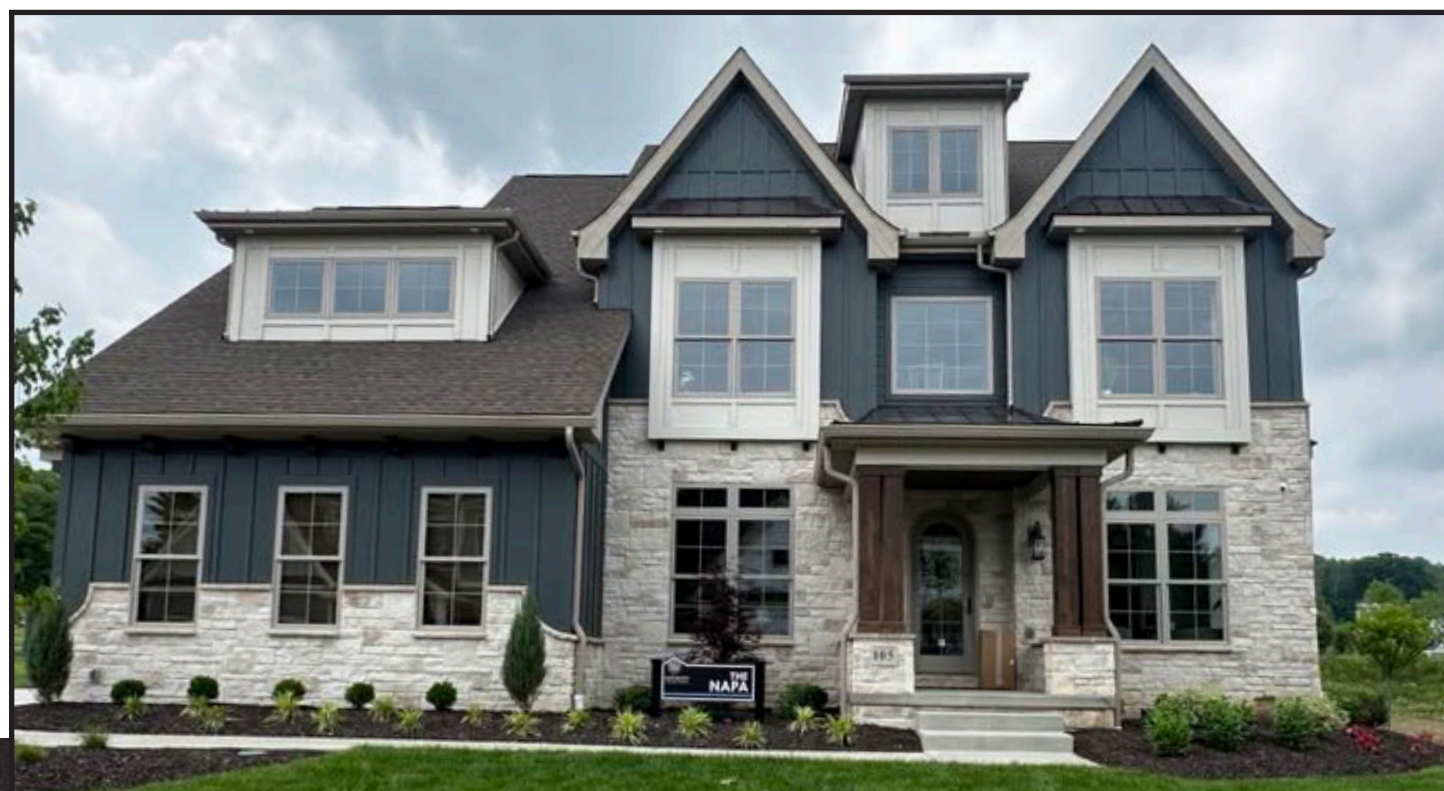
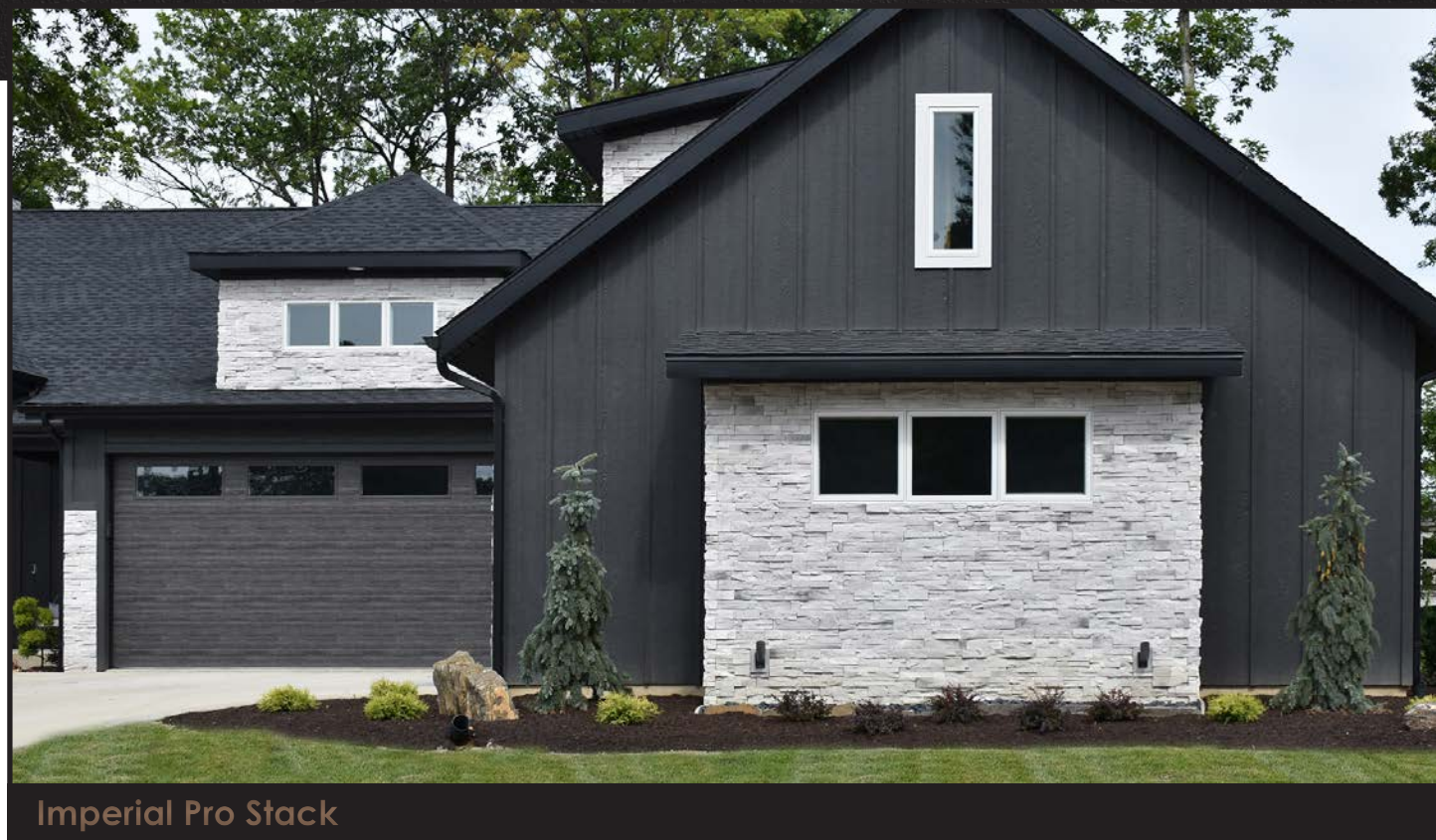


Monterey Weatherledge



Portland Smoke Old County Ledge

Featured Residential Applications



Featured Residential Applications



Moonlit Forest Old County Ledge



Blanc Old County Ledge



Jackson Creek Weatherledge



Desert Hollow Weatherledge

Weatherledge

DESERT HOLLOW

- The Weatherledge series is an attractive interweaving of stone that will make your next venture stand out.
- Eye-catchingly honed, its style is not as rugged or complex. It is characterized by smoother edges and rectangular pieces that draw you in to its allure.



Kodiak Ridge
WEATHERLEDGE

Buck Country
WEATHERLEDGE

Desert Hollow
WEATHERLEDGE

Weatherledge

BLUEGRASS



Jackson Creek
WEATHERLEDGE



Bluegrass
WEATHERLEDGE



Imperial
WEATHERLEDGE



Blanc
WEATHERLEDGE

• Weatherledge ranges from 1½ inches to 6 inches tall, and 4 inches to 23½ inches long.

Weatherledge

CHARCOAL



Portland Dusk
WEATHERLEDGE



Charcoal
WEATHERLEDGE



Portland Smoke
WEATHERLEDGE



Monterey
WEATHERLEDGE

Weatherledge

HARVEST



Portland Mist
WEATHERLEDGE



Venice
WEATHERLEDGE



Harvest
WEATHERLEDGE



Old County Ledge

PORTLAND SMOKE

- With smooth faces and a modern, angular edge, Old County Ledge is the stone of choice for those seeking an orderly look.
- This series is a well-organized combination of varied sizes and texture, but with an undeviating line.



Kodiak Ridge
OLD COUNTY LEDGE

Buck Country
OLD COUNTY LEDGE

Charcoal
OLD COUNTY LEDGE

Moonlit Forest
OLD COUNTY LEDGE

Harvest
OLD COUNTY LEDGE

Portland Smoke
OLD COUNTY LEDGE

Old County Ledge

BLACK ONYX



Bluegrass
OLD COUNTY LEDGE



Black Onyx
OLD COUNTY LEDGE



Portland Dusk
OLD COUNTY LEDGE



Portland Mist
OLD COUNTY LEDGE



Blanc
OLD COUNTY LEDGE

• Old County Ledge ranges in size from 1½ inches to 7 inches tall, by 4 inches to 23½ inches long.

Old County Ledge

SIESTA



White Onyx
OLD COUNTY LEDGE



Siesta
OLD COUNTY LEDGE



Venice
OLD COUNTY LEDGE



Lido
OLD COUNTY LEDGE



Vero
OLD COUNTY LEDGE



Pro Stack

IMPERIAL

- With a modern look that contains clean and contemporary lines, our ProStack brings you the most current style. The panels are uncluttered, long, and straight-edged.
- Simple yet dynamic, this choice of stone gives you the orderly, unfettered look you've been seeking.



White Onyx
PRO STACK

Venice
PRO STACK

Cumberland Fog
PRO STACK

Imperial
PRO STACK

Pro Stack

PORTLAND MIST



Siesta
PRO STACK



Portland Mist
PRO STACK



Natural
PRO STACK



Buck Country
PRO STACK



Pro Stack

BLACK ONYX



Charcoal
PRO STACK



Black Onyx
PRO STACK



Portland Smoke
PRO STACK



Moonlit Forest
PRO STACK



Thin Veneer Brick

FARMHOUSE

- Thin Veneer Brick is a throwback to when brick was hand-made and unique. For a rustic flair, our brick is perfect on your next project!
- Thin Veneer Brick is 2½ inches wide by 8 inches long by 1 inch deep.



White Onyx
THIN VENEER BRICK



Farmhouse
THIN VENEER BRICK



Mahogany
THIN VENEER BRICK



Plym Brick

LUNA

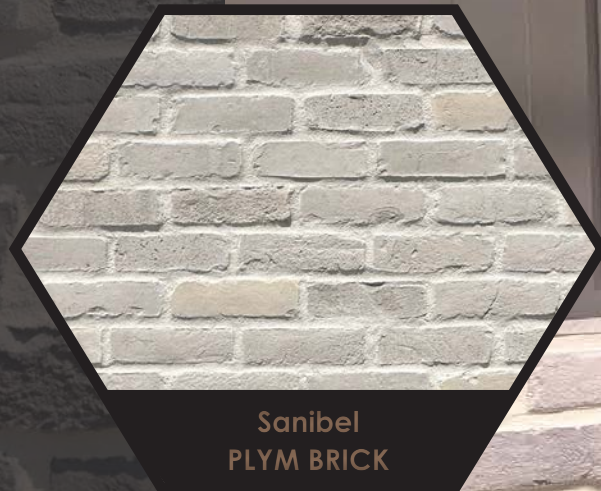
- Plym Brick is a classic look that will complement any modern or traditional style. The staggered layers of veneer brick have lovely textured edges. With a visible mortar backdrop and slight color variations in the stone, this veneer is perfect for those looking for a natural and softened look.



White Onyx
PLYM BRICK



Luna w/ White Grout
PLYM BRICK



Sanibel
PLYM BRICK



Luna w/ Dark Grout
PLYM BRICK



Ledgestone

BUCK COUNTRY

- The Ledgestone series lends abundant character to any project. Rustic with varying depths, the texture is an appealing mix that pleases the eye. Jagged and tapered pieces abound, grasping the essence of the natural ledgestone we mold.



Kodiak Ridge
LEDGESTONE



Buck Country
LEDGESTONE



Bluegrass
LEDGESTONE

Ledgestone

MONTEREY



- Ledgestone ranges from 1½ inches to 6 inches tall, and 4 inches to 23½ inches long.

Quarry Cut

LIDO

- With a stylish and edgy feel, Quarry Cut fits the bill when you want a well-arranged look.
- Chic and cultivated with its stack ledge and smaller thin pieces, it brings you uniform lines and diverse color. Perfect for a distinct look to set your design apart.



Portland Smoke
QUARRY CUT

Charcoal
QUARRY CUT

Buck Country
QUARRY CUT

Lido
QUARRY CUT

Quarry Cut

PORTLAND MIST



- Quarry Cut ranges from 1 inch to 4½ inches tall, and 3 inches to 23½ inches long.

Dressed Ashlar

WHITE ONYX

- Dressed Ashlar's straight lines and squared edges will give your next project a strong consistency that exudes culture and refinement.
- Dressed Ashlar ranges from 3 inches to 10 inches tall, and 6 inches to 15 inches long.



Venice
DRESSED ASHLAR



Braemar
DRESSED ASHLAR



Luna
DRESSED ASHLAR



Siesta
DRESSED ASHLAR



White Onyx
DRESSED ASHLAR

Southern Limestone

BRAEMAR

- Southern Limestone's traditional look gives projects a bold and strong appearance. They are a more natural cut, making it the perfect addition.



Venice w/ White Grout
SOUTHERN LIMESTONE

Venice w/ Dark Grout
SOUTHERN LIMESTONE

Luna
SOUTHERN LIMESTONE

White Onyx
SOUTHERN LIMESTONE

Acadia
SOUTHERN LIMESTONE

Braemar
SOUTHERN LIMESTONE

Southern Limestone

BURNT RUSSET



• Southern Limestone is approximately 2½ inches to 16 inches tall, by 5 inches and up to 23½ inches long.

Midwest Dimensional

LUNA

- Midwest Dimensional offers a natural yet classy appearance to any structure. The contrasting stone sizes give it a grande appearance. Each piece has a soft tone with only a slight variation in color and gentle edges.
- The Midwest series, with dark cool-toned roofing and frames to make a statement, or with softer, warm-toned features for a classic and smooth look.



White Onyx
MIDWEST DIMENSIONAL



Austin Villa
MIDWEST DIMENSIONAL



Siesta
MIDWEST DIMENSIONAL



Pebble
MIDWEST DIMENSIONAL



Luna
MIDWEST DIMENSIONAL

Designer Cut

WHITE ONYX

- This stone features a sleek, modern Designer Cut layout with clean, staggered lines that cast subtle shadows, enhancing its depth and dimension.



Siesta
DESIGNER CUT



White Onyx
DESIGNER CUT



Black Onyx
DESIGNER CUT



Fieldstone

CHARCOAL

- Choosing a homey look with stone brings an exciting blend of variables to choose from. Our Fieldstone clarifies this style and brings it to the forefront. With a varied and irregular woodsy union of shapes, this series is a warm invitation to come home and unwind.
- Fieldstone ranges from 4 inches to approximately 22 inches.



Venice
FIELDSTONE



Acadia
FIELDSTONE



Vero
FIELDSTONE



Buck Country
FIELDSTONE



Bluegrass
FIELDSTONE



Charcoal
FIELDSTONE

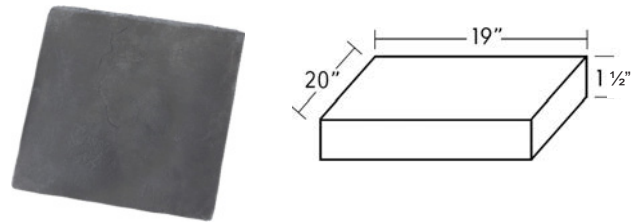


Portland Smoke
FIELDSTONE

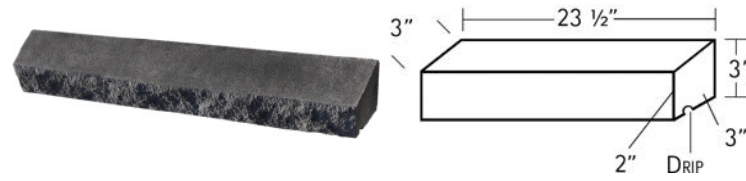


Accessory Sizing Guide

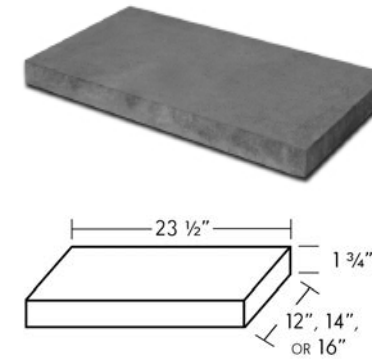
HEARTHSTONE



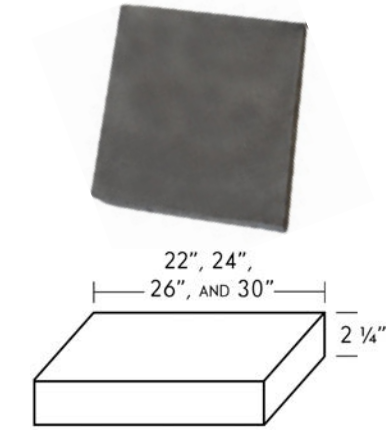
WATERTABLE SILL



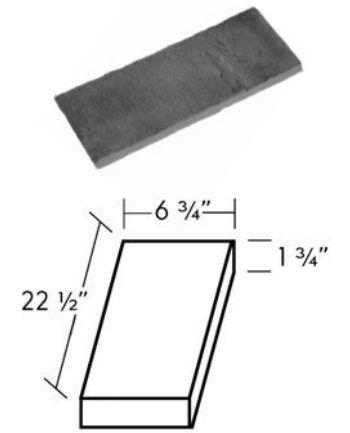
WALL CAP



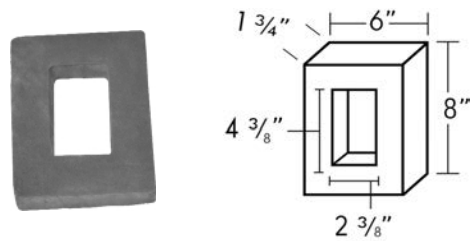
PIER CAP



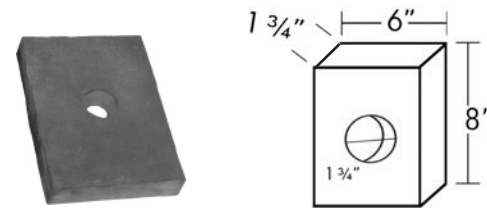
WINDOW TRIM



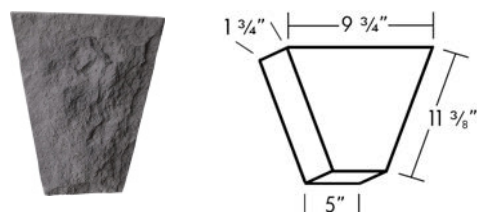
RECEPTACLE BLOCK



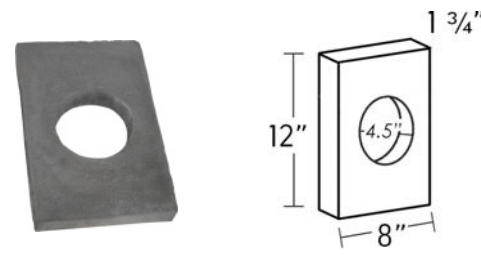
HYDRANT BLOCK



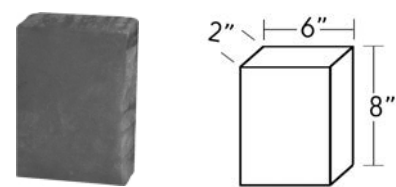
ROCKFACE KEystone



LIGHT BLOCK



ROWLOCK



AVAILABLE COLORS

- | | | | |
|--|----------|--|------------|
| | Brown | | Gray |
| | Charcoal | | White |
| | Tan | | Black Onyx |



Imperial Pro Stack with white Rowlocks and Water Table Sills

Color Reference Guide

WEATHERLEDGE



OLD COUNTY LEDGE



SOUTHERN LIMESTONE



LEDGESTONE



QUARRY CUT



FIELDSTONE



PRO STACK



DRESSED ASHLAR



MIDWEST DIMENSIONAL



THIN VENEER BRICK



PLYM BRICK



DESIGNER CUT



HEARTHSTONE



White Tan Gray Brown Charcoal Black Onyx

WATERTABLE SILL



White Tan Gray Brown Charcoal Black Onyx

RECEPTACLE BLOCK



White Tan Gray Brown Charcoal Black Onyx

HYDRANT BLOCK



White Tan Gray Brown Charcoal Black Onyx

ROCKFACE KEYSTONE



White Tan Gray Brown Charcoal Black Onyx

LIGHT BLOCK



White Tan Gray Brown Charcoal Black Onyx

ROWLOCK



White Tan Gray Brown Charcoal Black Onyx

WALL CAP



White Tan Gray Brown Charcoal Black Onyx

PIER CAP



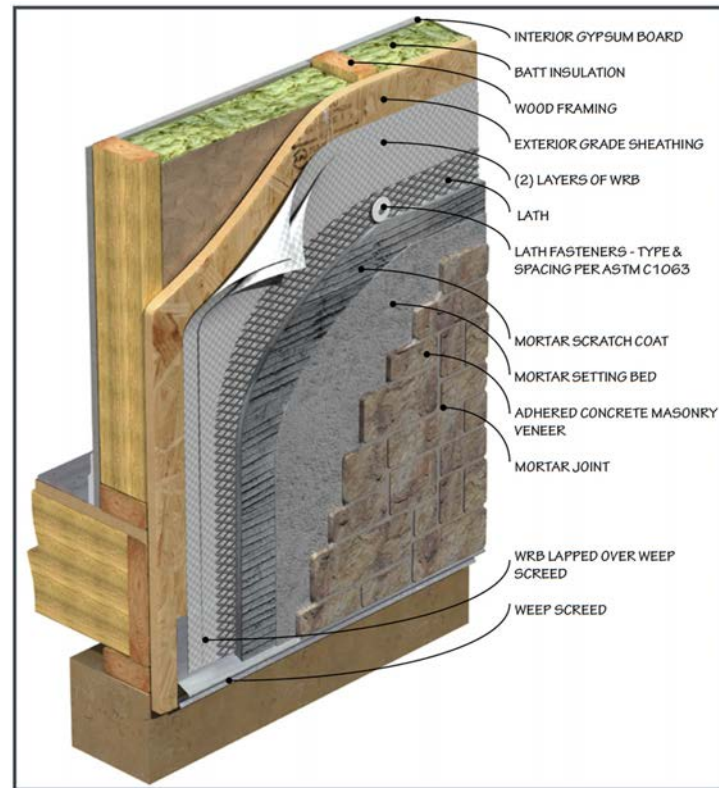
White Tan Gray Brown Charcoal Black Onyx

WINDOW TRIM

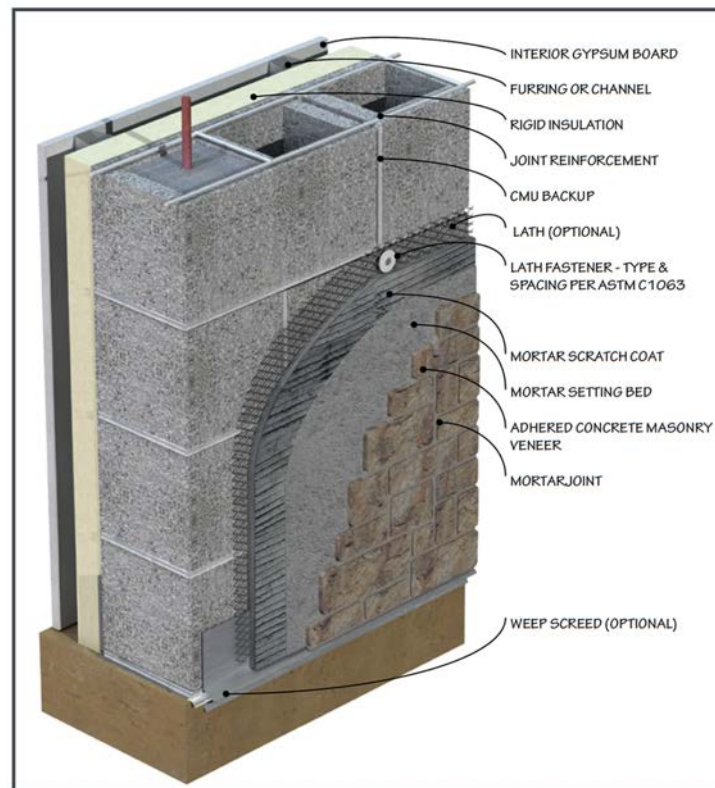


White Tan Gray Brown Charcoal Black Onyx

1. INSTALLATION OVER WOOD FRAMING



2. INSTALLATION OVER CONCRETE MASONRY UNITS



APPLYING THE METAL LATH

Apply a moisture barrier of housewrap and 30 pound felt. Overlap horizontal joints 5 inches and vertical joints 8 inches. All corners must be wrapped a minimum of 16 inches. Then apply 2.5 pound metal lath or equivalent. Metal lath must be overlapped in the same manner as the felt. Fasten with wide crown staples at least 1 inch in length. Make sure all chimneys and windows are properly flashed.

APPLYING THE SCRATCH COAT

Apply a scratch coat using Type M or Type N mortar, approximately 1/4 inch to 1/2 inch thick. Make sure the mortar is not too wet or too dry.

APPLYING THE STONE

Install corners first. Spread mortar evenly on the back of the stone, approximately 1/2 inch thick. When applying the stone to the wall, move the stone back and forth a little bit in a circular motion. Make sure your mortar is not too dry or too wet for proper bonding. In hot weather you may need to wet down the back of the stone or the scratch coat.

GROUTING INSTRUCTIONS

Use a grout bag to grout the joints, making sure you do not get cement on the face of the stone. Let the grout joint set up until it is slightly dry, then strike the joint with a jointer or other similar implement. Make sure it isn't too wet or too dry. If the mortar wets or stains a brush it is too wet. Brush out the joints with a soft brush.

- 50 year Limited Warranty from the date of purchase, when installed to Manufacturer's instructions and according to local building codes. Warranty does not cover damaged product resulting from building settlement, wall movement, improper installation, or discoloration due to airborne contaminants.

- The Contractor and Architect are responsible for proper installation. Prestige Stone Products, LLC is not responsible for the structural wall surface it is applied to. Make sure to follow all of your local building codes. Building codes will vary from state to state, county to county.

- Warranty is subject to all other terms of the written warranty, a copy of which can be obtained from your dealer or by visiting:

www.prestigestoneproducts.com

SPECIAL CONSIDERATIONS FOR PRO STACK / TIGHT STACK INSTALLATIONS

Compared to other masonry installations where a grout joint is visible and surrounds each piece, tight fitting modular installations don't have a true grout joint reinforcement to lock in stone improving adherence. It is recommended to use a compliant Polymer Modified Mortar or bonding agent and proper installation techniques. A full, complete mortar setting bed is mandatory and will provide an effective seal behind and around the stone. Joint installations using regular type mortars don't experience such adherence deficiencies because the grout serves as an additional bonding area around the edges of each veneer piece and tends to lock each piece in place. Grout seals the area surrounding each veneer piece from water infiltration to the back of the veneer. If water collects in the voids behind the veneer and freezes, expansive forces can cause the veneer to disengage.

SUMMARY

Choose the proper mortar. Standard type S or N Mortar is suitable for jointed grouted veneer. For a Pro Stack type application use a polymer Modified Mortar complying with ANSI A118.4 or ANSI A118.15 Or equivalent, or a liquid bonding agent.

Ensure that wall bonding surfaces and back of the veneer are free of dust, laitance, loose concrete particles, and any film that could impede a bond.

When applying Type S or N mortar, wet the scratch coat and back of each veneer piece. Check the mortar manufacturer's recommendations regarding "wetting" when using polymer modified mortar.

Mix mortar with proper amount of sand and water to form proper consistency for maximum adherence.

Completely butter each veneer piece, (1/2") and work firmly into place.

Ensure complete mortar setting bed coverage and full perimeter. "Squeeze out"

If necessary, use a mortar application method in which mortar is troweled onto the scratch coat, and also back buttered onto the veneer.

Do not dislodge previously installed veneer. Mortar bond may be compromised.

SET THE VENEER SECURELY

This cannot be emphasized enough- the veneer must be pressed firmly into the mortar setting bed, and onto the scratch coat and worked delicately back and forth with a slight rotating action. You must achieve mortar squeeze out in a volume that results in full mortar setting bed covering the scratch coat and the back of the veneer completely. Over "buttering" will also effect bond efficacy. Once the veneer has set it should not be dislodged or the bond may be compromised. Care should be taken to avoid inadvertent movement after the initial set, especially with tight fit installations where veneer pieces are intentionally touching each other.



Scan for IAPMO Evaluation Report



Scan for the MSV Installation Guide

2026



9290 Winesburg Road

Dundee, OH 44624

www.prestigestoneproducts.com

330.439.5318

