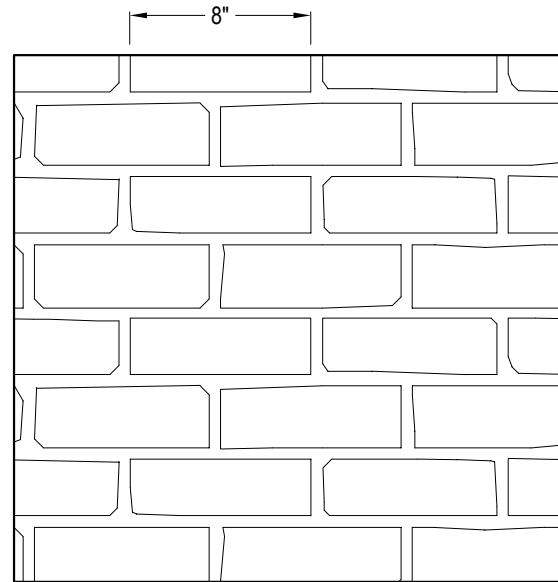
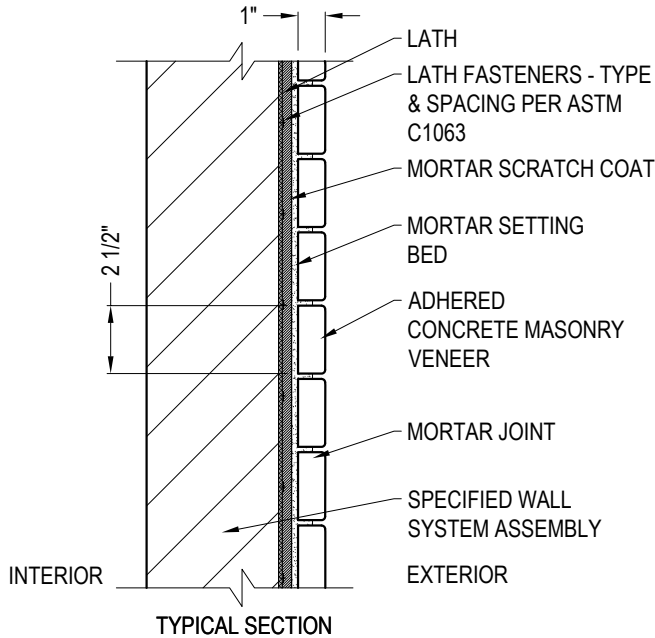




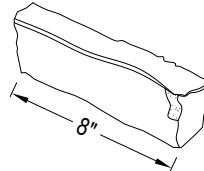
PRESTIGE STONE PRODUCTS
9290 WINESBURG RD.
DUNDEE, OH 44624
PHONE: (330) 439-5318
FAX: (330) 439-5319
www.goprestigestone.com

☒ SELECT DESIRED PROFILE/COLOR:

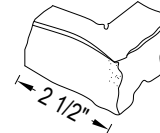
☐ BLACK ONYX ☐ FARMHOUSE ☐ IMPERIAL ☐ MAHOGANY ☐ REDWOOD ☐ WHITE ONYX



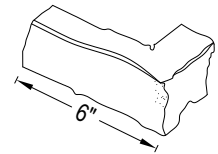
FRONT ELEVATION - THIN VENEER BRICK



FLAT DETAIL



CORNER DETAIL
SHORT TAIL



CORNER DETAIL
LONG TAIL

SPECIFICATIONS:

MATERIALS: COMBINATION OF PORTLAND CEMENT, LIGHTWEIGHT AGGREGATES, AND PERMANENT MINERAL OXIDE COLORS. PRODUCTS ARE MANUFACTURED IN MOLDS WHICH ARE PRODUCED FROM NATURAL STONE.

COMPRESSIVE STRENGTH: IN ACCORDANCE ASTM C39 - 6760 PSI

ABSORPTION: ASTM C1195 - 14.7%

SPLIT TENSILE TEST: ASTM C496 - 499 PSI

FREEZE / THAW: (C67) NO DISINTEGRATION AND LESS THAN 0.2% WEIGHT LOSS

FIRE RATING: ZERO FLAME SPREAD, ZERO SMOKE DEVELOPED, ZERO FUEL CONTRIBUTED

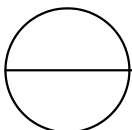
COLOR RETENTION: PERMANENT MINERAL OXIDE COLOR

VENEER UNIT WEIGHT: 10-12 LBS. INSTALLED

* PRODUCTS WILL VARY IN SIZE AND SHAPE.

NOTES:

1. INSTALLATION TO BE COMPLETED IN ACCORDANCE WITH MANUFACTURER'S SPECIFICATIONS.
2. DO NOT SCALE DRAWING.
3. THIS DRAWING IS INTENDED FOR USE BY ARCHITECTS, ENGINEERS, CONTRACTORS, CONSULTANTS AND DESIGN PROFESSIONALS FOR PLANNING PURPOSES ONLY. THIS DRAWING MAY NOT BE USED FOR CONSTRUCTION.
4. ALL INFORMATION CONTAINED HEREIN WAS CURRENT AT THE TIME OF DEVELOPMENT BUT MUST BE REVIEWED AND APPROVED BY THE PRODUCT MANUFACTURER TO BE CONSIDERED ACCURATE.
5. CONTRACTOR'S NOTE: FOR PRODUCT AND COMPANY INFORMATION VISIT www.CADdetails.com/info AND ENTER REFERENCE NUMBER 5381-011.



PROFILES

THIN VENEER BRICK